

COVID-19 PANDEMIC HEALTH RESPONSE

VADM (ret) Rocky Bono, MD

WSHA Webinar

August 10, 2020



Pandemic Health Response priorities

- **Protect frontline healthcare workers**
 - Testing
 - Surveillance
 - Isolation, quarantine and hospital care
- **Optimize WA state health resources**
 - Ongoing pandemic response
 - Anticipated fall respiratory surge
- **Keep all Washingtonians safe**
 - Systemically underserved
 - COVID and non-COVID conditions



Areas of focus

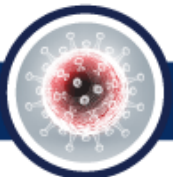
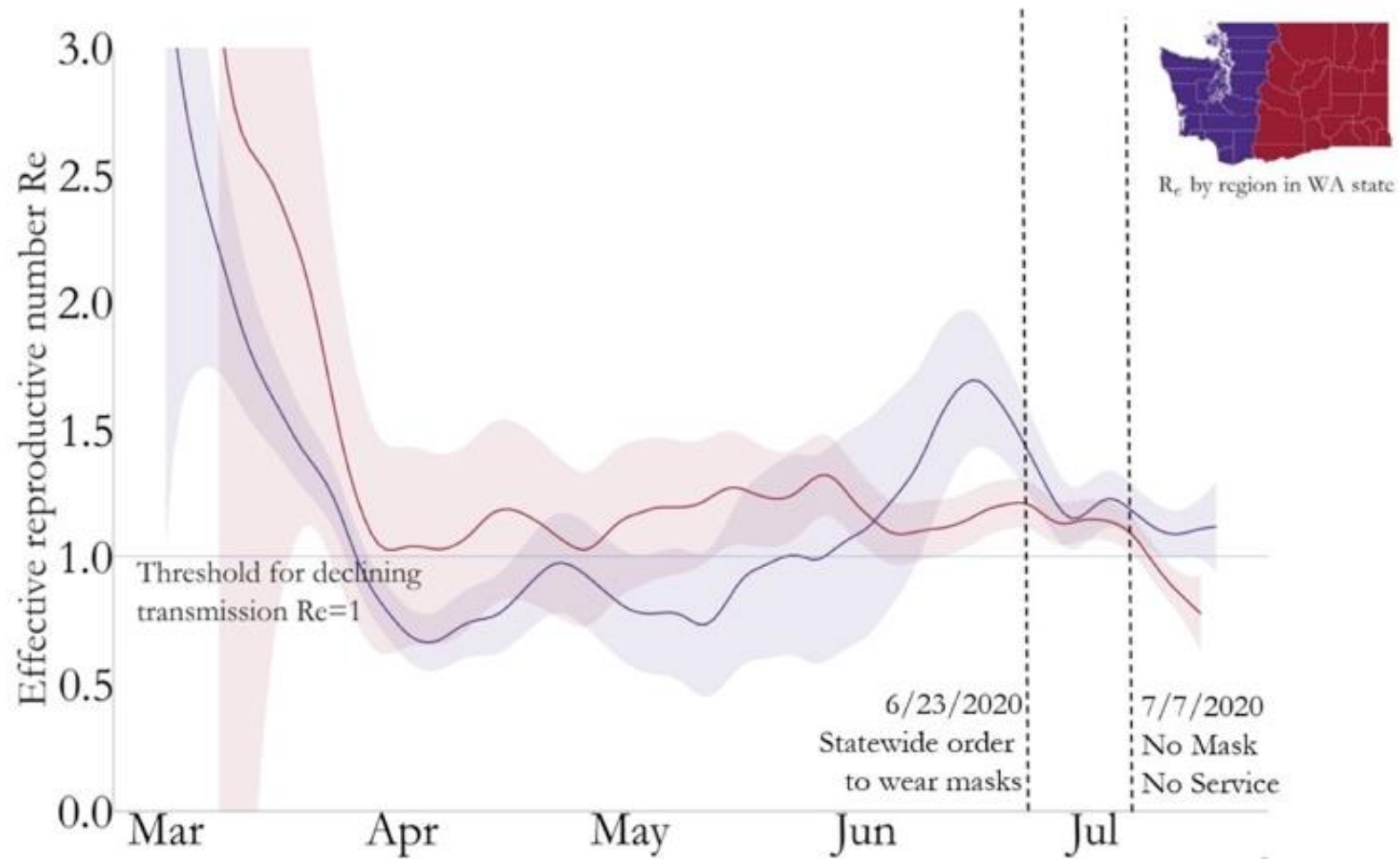
- PPE
- Testing
- Long term care
- Fall surge plan



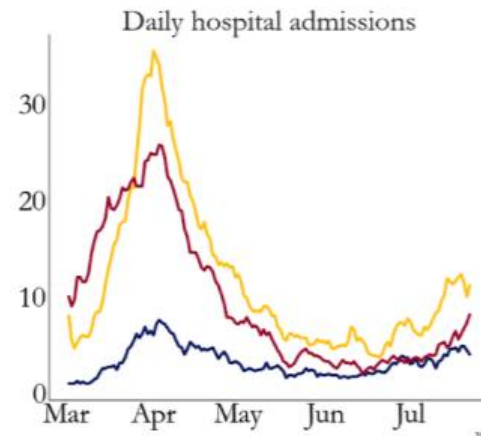
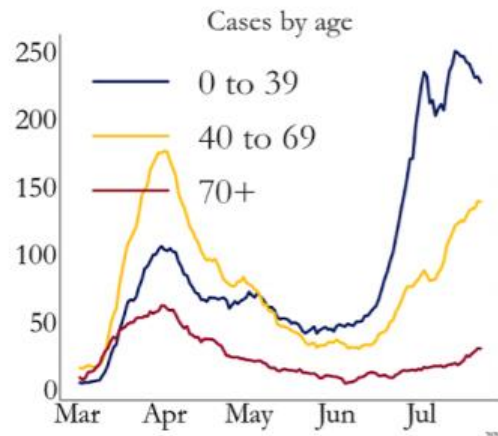
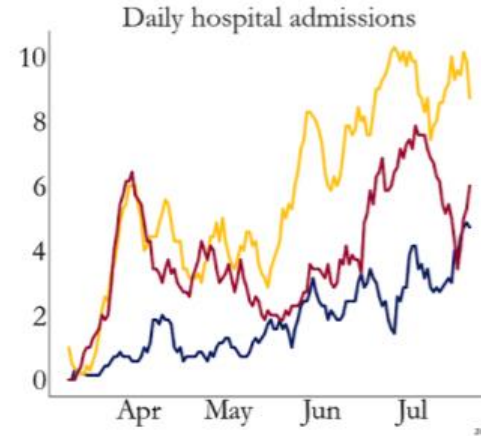
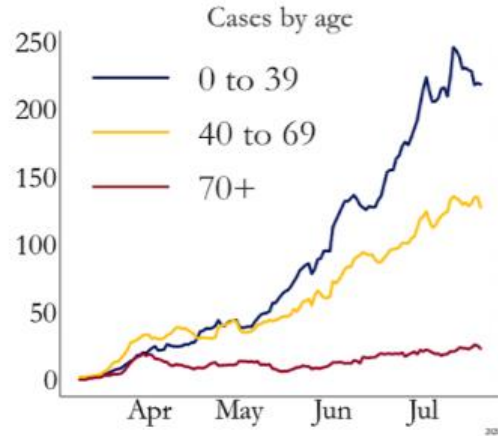
Current Overview



IDM Transmission Rate (R_e)



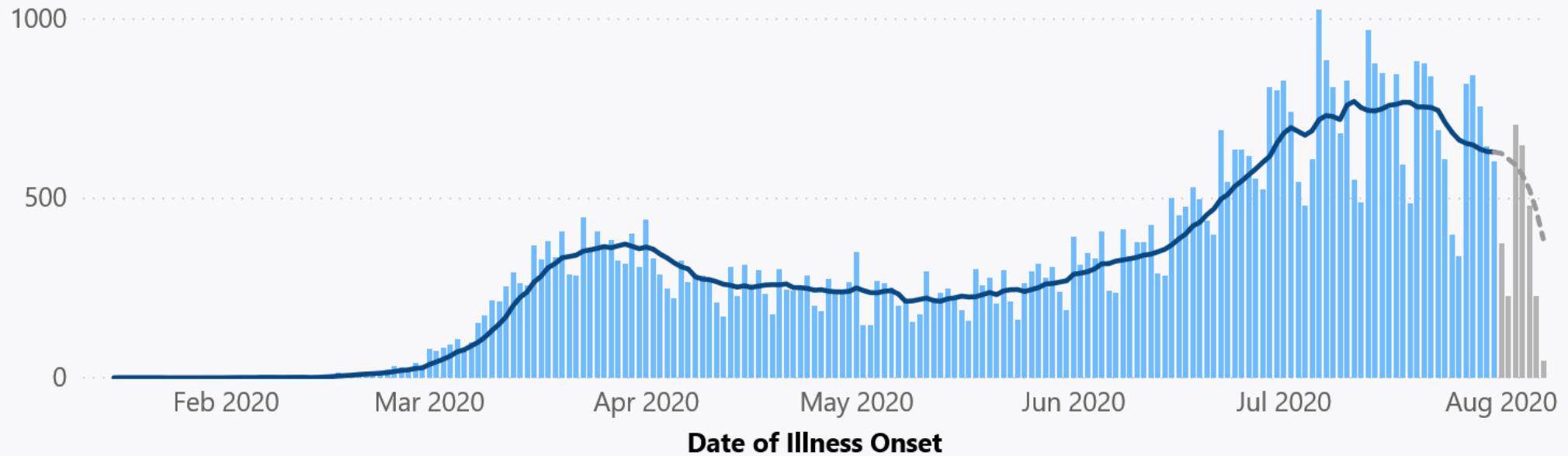
Cases and hospital admissions by age



Confirmed case counts

Confirmed Case Counts

● Confirmed Cases ● Data incomplete for recent dates — Confirmed Cases (7 day rolling avg.) — Incomplete data (7 day rolling avg.)

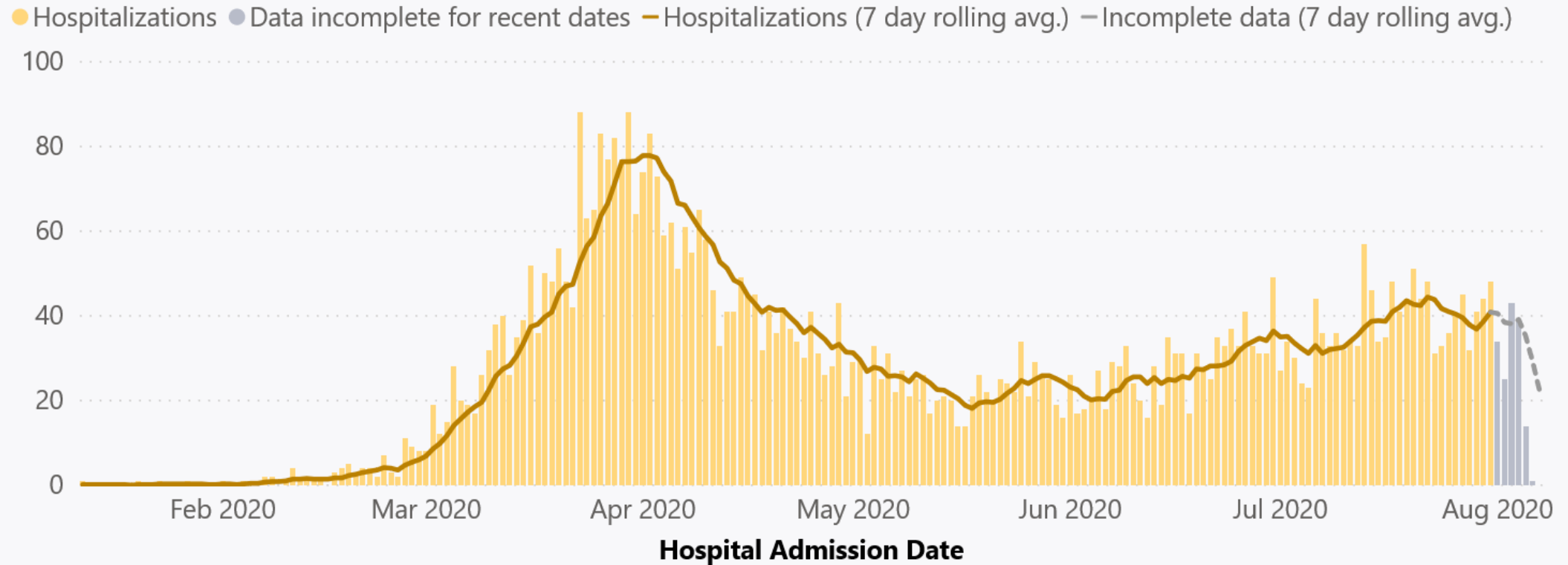


192 of 62,523 confirmed cases do not have an assigned county. Illnesses from the last 4 to 7 days may not yet be reported.



Hospitalizations

Hospitalizations Counts



135 hospitalizations don't have a hospital admission date available. 31% of statewide confirmed cases have unknown hospitalization status. Hospitalizations from the last 7 days may not yet be reported.



Today's topics

- PPE working group kick off
- All-of-Washington pandemic health response
- Playbook for strategies, actions and recommendations
- Influenza vaccine for HCWs



PPE Working Group kick-off

- Infection disease
- Supply chain SMEs
- Nursing leaders
- ASCs
- Private practice
- LTC
- Labor
- Dentistry
- Department of Enterprise Services
- Department of Health
- Department of Social and Health Services
- Governor's Public Health and Health Care Sector Committee



Objectives

- PPE Public-Private Partnership (Proclamation)
- Sufficient PPE to avoid conservation/reuse protocols
- Transparent PPE inventory, supply chain and usage process
- Adequate PPE surge supply
- Alternate sources of PPE
- State role in PPE procurement
- Centralized PPE for vulnerable and minority populations



PPE Public-Private Partnership

- 10-day sprint
- Agency guidelines
- Collective, state-wide actions and recommendations



Testing Public-Private Partnership WG stand up next

- LHJs
- DOH
- Health care system
- Employers groups
- Health plans
- HCA



Thank you

