

COVID-19 PANDEMIC HEALTH RESPONSE

VADM (ret) Rocky Bono, MD

WSHA Webinar

July 27, 2020



WASHINGTON STATE COVID-19 PANDEMIC HEALTH RESPONSE

Pandemic Health Response priorities

- **Protect frontline healthcare workers**
 - Testing
 - Surveillance
 - Isolation, quarantine and hospital care
- **Optimize WA state health resources**
 - Ongoing pandemic response
 - Anticipated fall respiratory surge
- **Keep all Washingtonians safe**
 - Systemically underserved
 - COVID and non-COVID conditions



Areas of focus

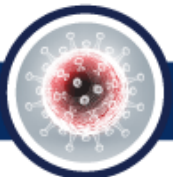
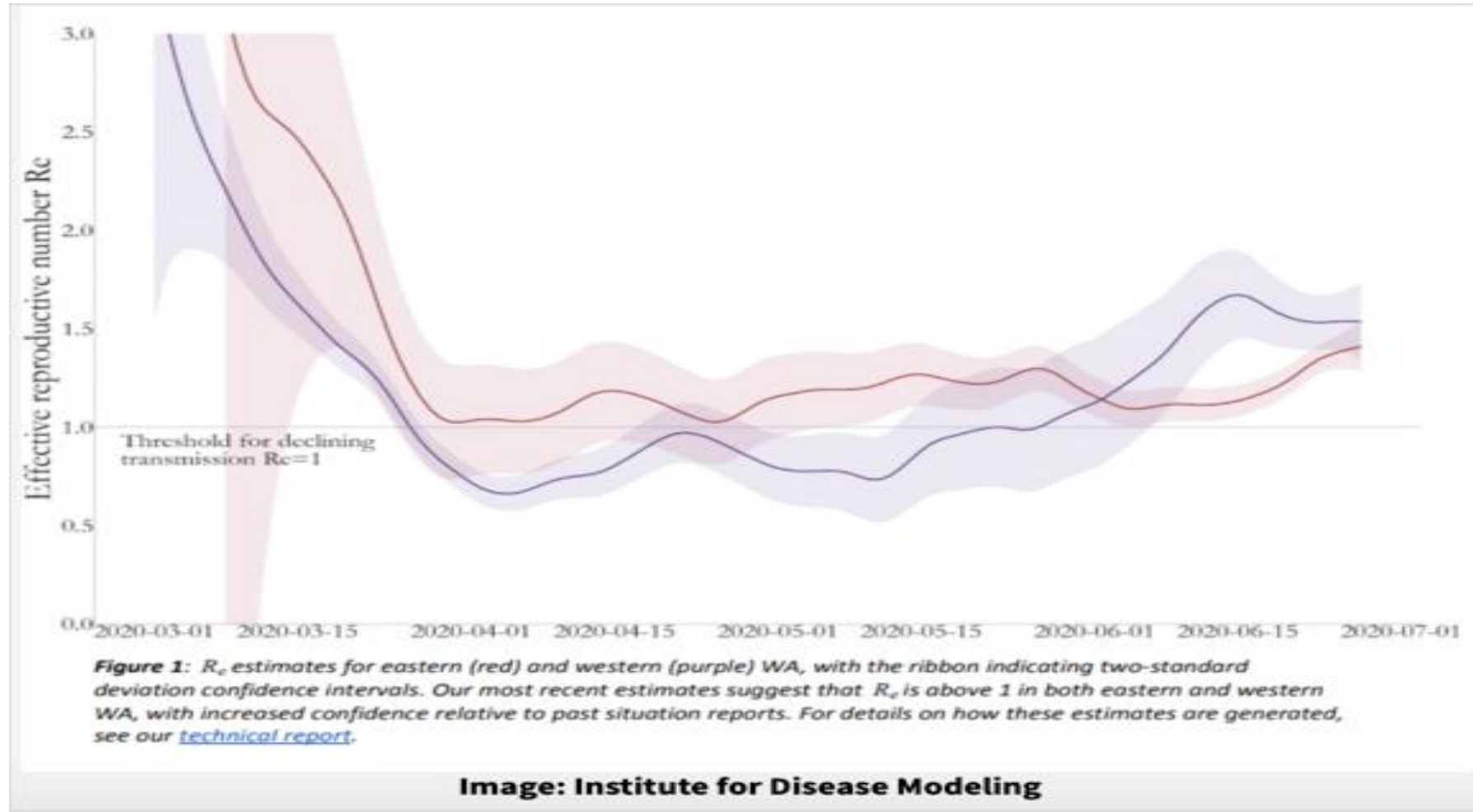
- PPE
- Testing
- Long term care
- Fall surge plan



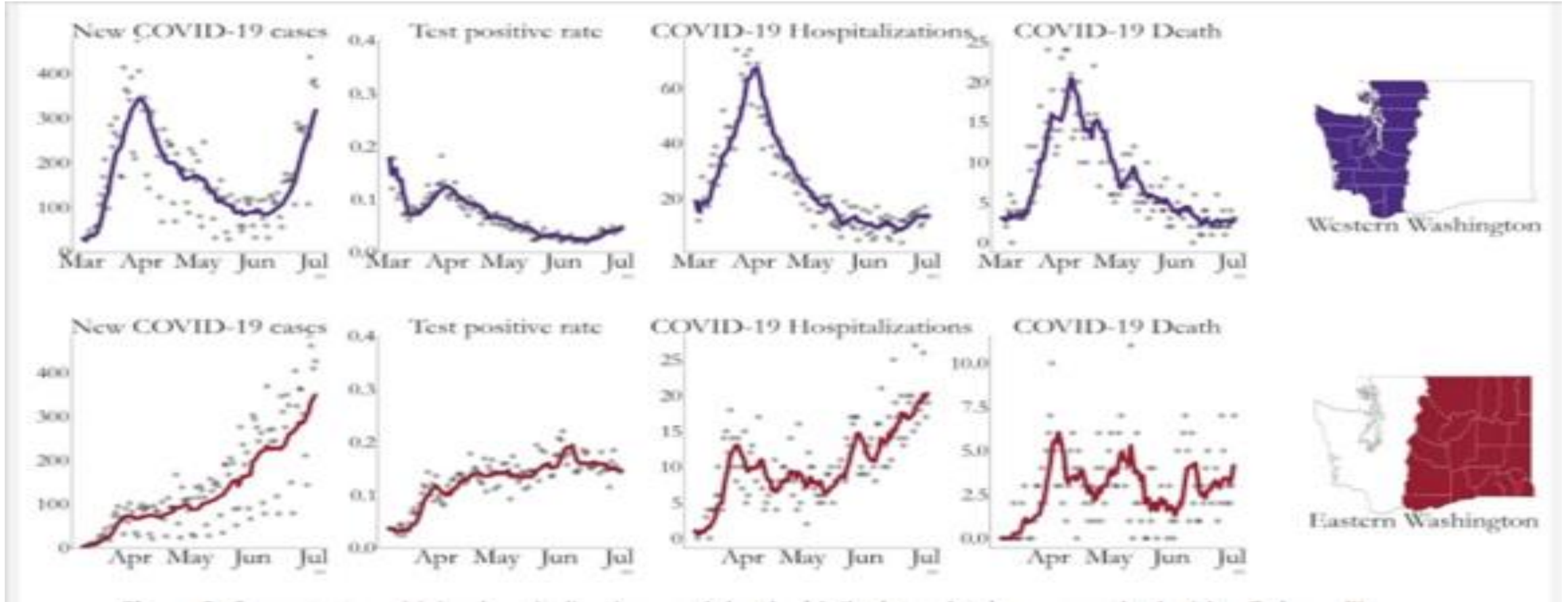
Current Overview



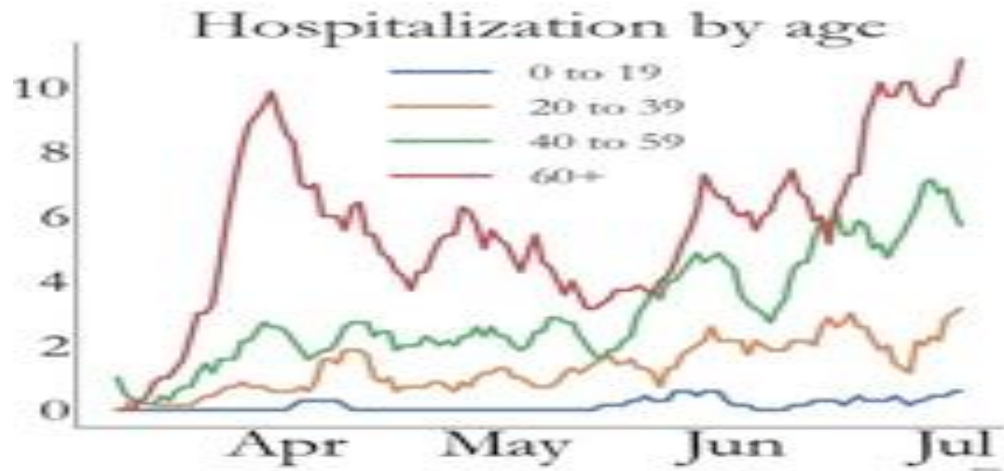
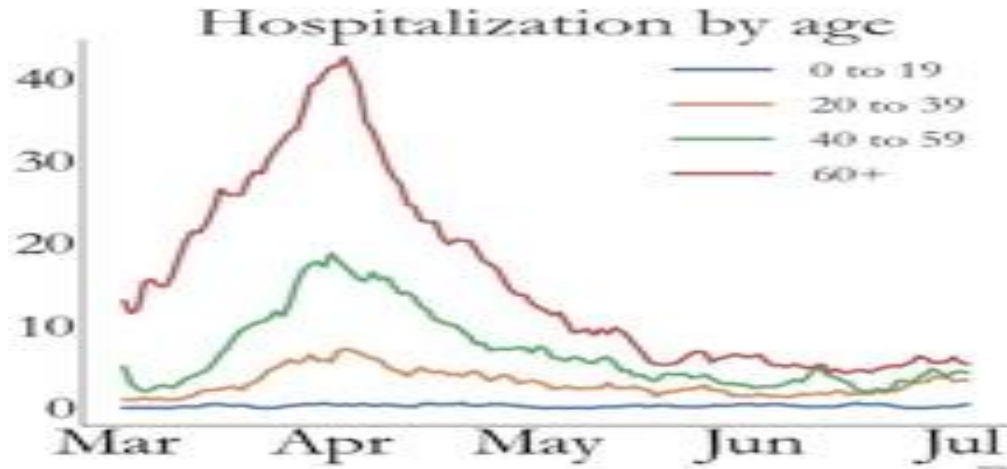
IDM Transmission Rate (R_e)



Regional rates



Hospitalization by age groups



Confirmed case counts

COVID-19 in Washington State

Confirmed Cases and Deaths by Illness Onset Date, and Hospitalizations by Admission Date

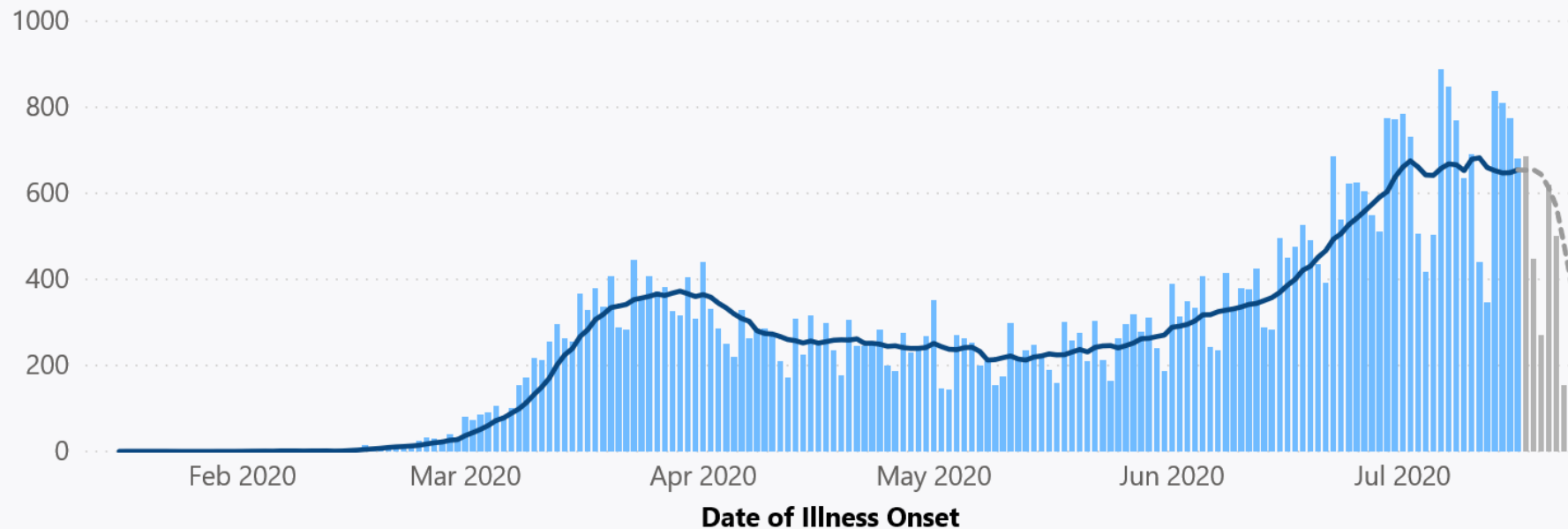
This chart shows the progression of the COVID-19 outbreak in Washington by cases, hospitalizations and deaths over time and is known as an epidemiologic curve. The epidemiologic curve is the curve referred to in the phrase, "flatten the curve."

[Learn More](#)



Confirmed Case Counts

● Confirmed Cases ● Data incomplete for recent dates — Confirmed Cases (7 day rolling avg.) — Incomplete data (7 day rolling avg.)



142 of 50,824 confirmed cases do not have an assigned county. Illnesses from the last 4 to 7 days may not yet be reported.



Hospitalizations

COVID-19 in Washington State

Confirmed Cases and Deaths by Illness Onset Date, and Hospitalizations by Admission Date

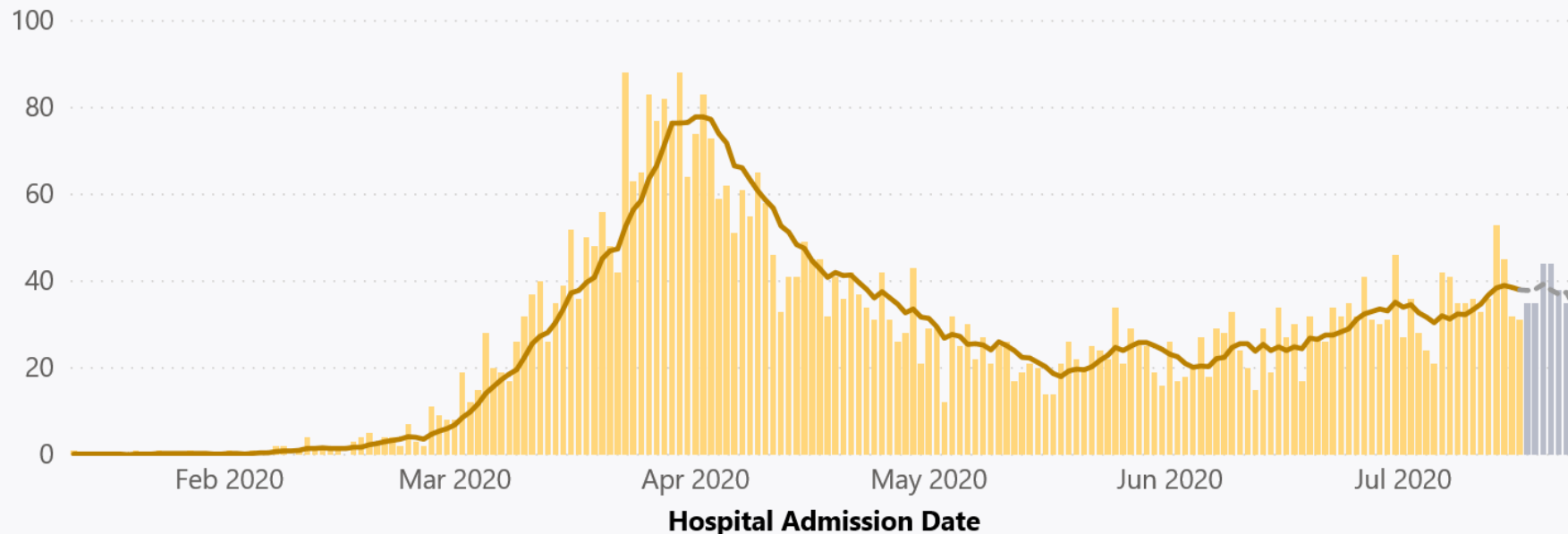
This chart shows the progression of the COVID-19 outbreak in Washington by cases, hospitalizations and deaths over time and is known as an epidemiologic curve. The epidemiologic curve is the curve referred to in the phrase, "flatten the curve."

[Learn More](#)



Hospitalizations Counts

● Hospitalizations ● Data incomplete for recent dates — Hospitalizations (7 day rolling avg.) — Incomplete data (7 day rolling avg.)



103 hospitalizations don't have a hospital admission date available. 30% of statewide confirmed cases have unknown hospitalization status. Hospitalizations from the last 7 days may not yet be reported.



Today's topics

- Behavioral health impacts to healthcare workforce
- Statewide patient transport and transfer
- WA HEALTH state of play
- PPE working group kick off
- Testing work group up next



Behavioral health forecast

- Upwards of 2-3 million Washingtonians likely to experience clinically significant symptoms in next 3-6 months



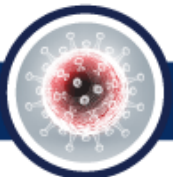
Healthcare workforce risk factors

- Risk of infection
- Exposure to traumatic or challenging events
- Compassion fatigue
- Burnout
- Role conflict
- Reduced access to PPE



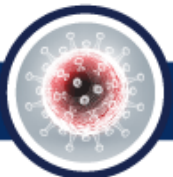
Impacts to healthcare providers

- 70% of COVID providers reporting extreme stress
- Likely to increase through the fall
- Peak in September-December
- Organizations should start planning now:
 - Build resiliency
 - Provide support



Behavioral Health Group support

- Trainings available on request:
 - Disaster psychology
 - Tools for coping with crisis
 - Increasing personal resilience
 - Train-the-trainer modules
 - Healthcare workforce resilience building
- Guidance/resources on behavioral health impacts of COVID-19



Behavioral health resources

- Impact forecasts, situational reports, guidance, response resources:
doh.wa.gov/covid19/behavioralhealth
- Public-facing behavioral health resources:
coronavirus.wa.gov/wellbeing



Statewide patient transport and transfer

- Yakima, Chelan & Douglas patient transfers
- Coalition support
- RC3 centralized coordination
- Transport and ambulance services
- DOH (WA HEALTH) and EOC interface



WA HEALTH state of play

- Transition to DOH Health Systems Quality Assurance
- Extended support by Microsoft
- PPE data visualization
- Decision support to RC3 operations
- Support for federal reporting requirements



PPE Working Group kick-off

- Infectious disease
- Supply chain SMEs
- Nursing leaders
- ASCs
- Private practice
- LTC
- Labor
- Dentistry
- Department of Enterprise Services
- Department of Health
- Department of Social and Health Services
- Governor's Public Health and Health Care Sector Committee



Objectives

- PPE Public-Private Partnership (Proclamation)
- Sufficient PPE to avoid conservation/reuse protocols
- Transparent PPE inventory, supply chain and usage process
- Adequate PPE surge supply
- Alternate sources of PPE
- State role in PPE procurement

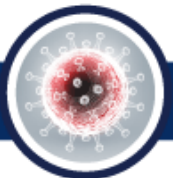


PPE Public-Private Partnership

- 10-day sprint
- Draft proclamation for Governor's signature



Testing Public-Private Partnership work group stand up next



Thank you

