

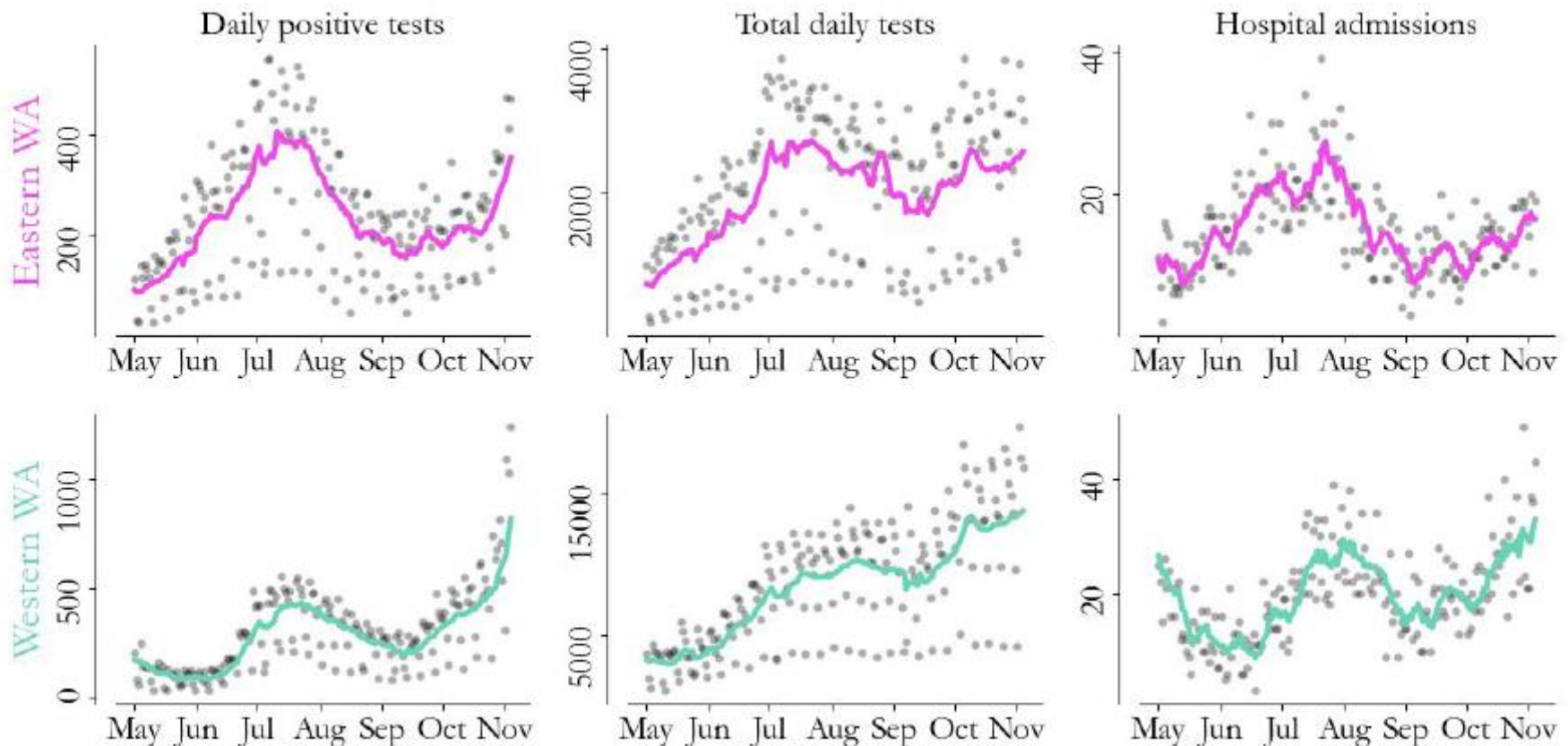
WSHA Executives Call

November 13, 2020

Overview

- Epidemiology
- New hospital capacity metrics for public dashboard
- Governor's new order
- Bamlanivimab

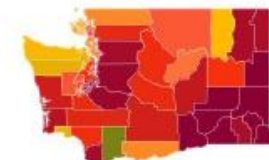
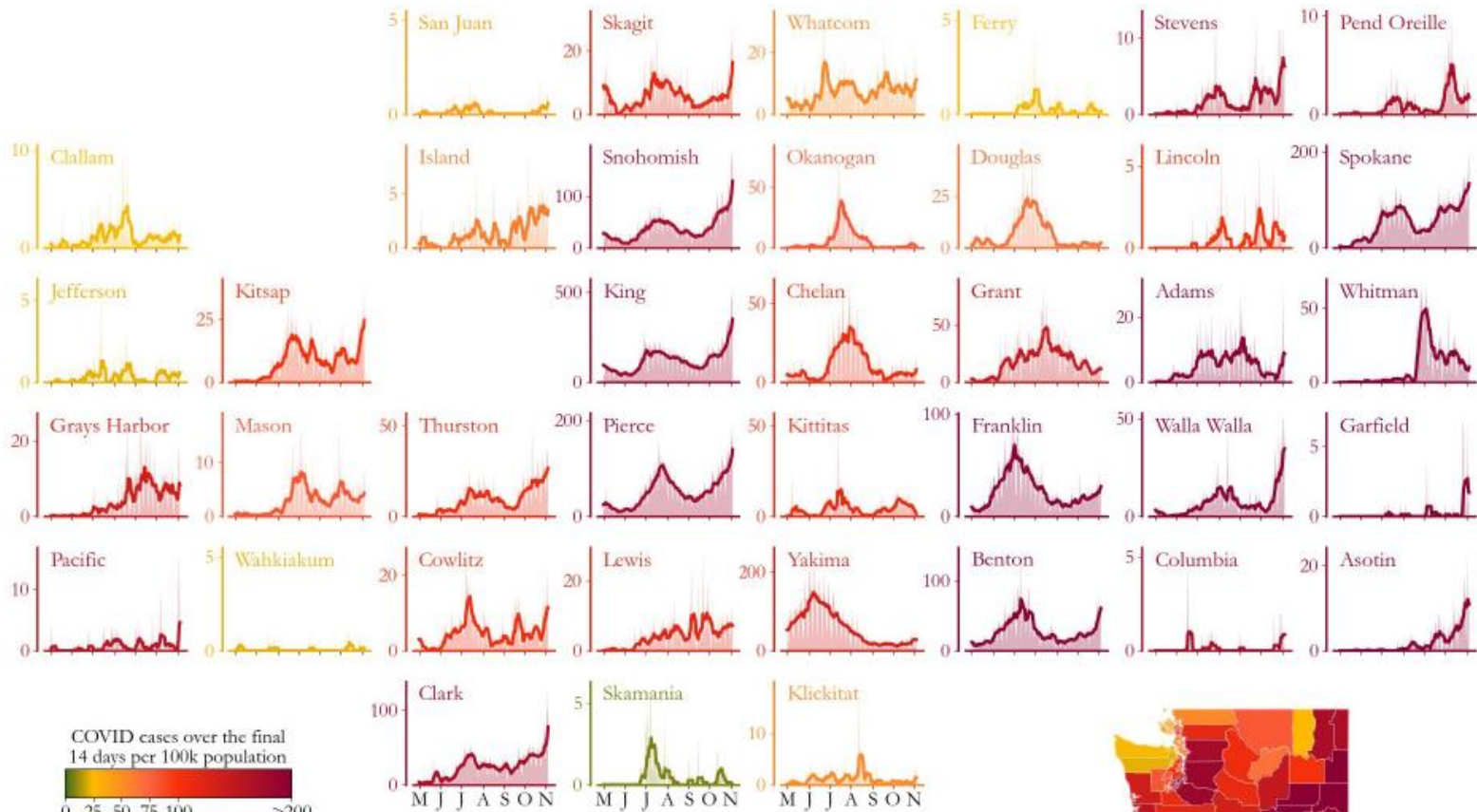
Disease activity is accelerating



Seven-day rolling case counts (left panels), total tests (middle) and hospitalizations (right panels)

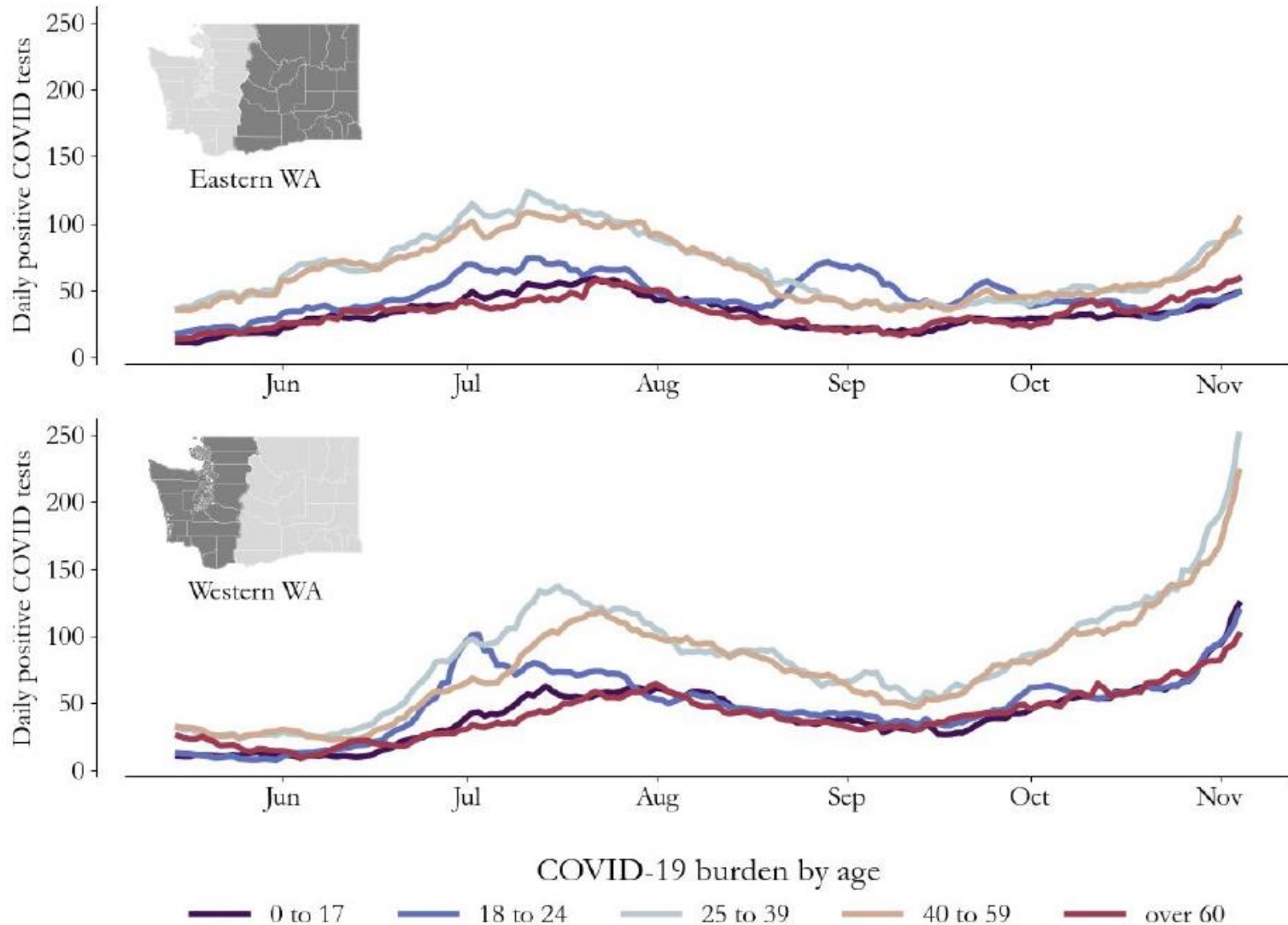
Source: <https://covid.idmod.org/#/ResearchandReports>

COVID-19 activity is geographically widespread

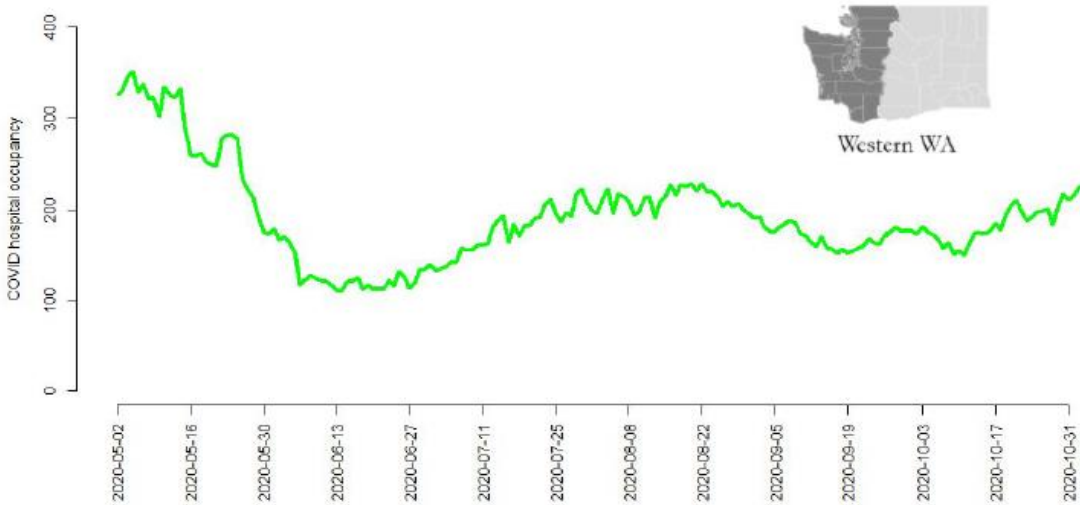
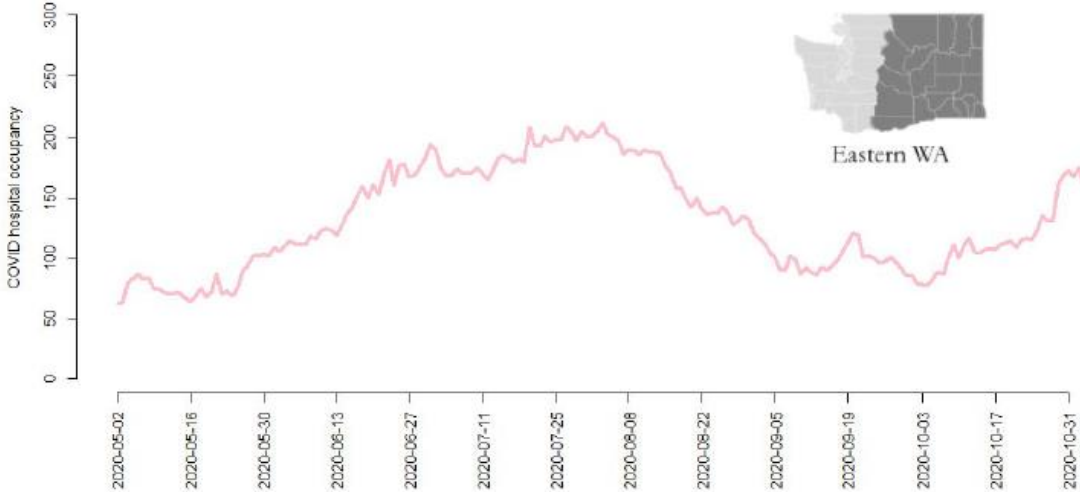


Current activity level in Washington State

COVID-19 is demographically widespread



COVID-19 hospital occupancy is increasing



New proposed public metrics

- % of adult staffed beds occupied
- % of ALL staffed beds occupied by COVID patients
- % of adult ICU staffed beds occupied
- % of ALL ICU beds occupied by COVID patients
- Number of suspected and confirmed COVID-19 patients in the hospital

Situation

- Exponential growth phase of pandemic
- Messaging to the public around socializing was not working
- We needed to act
- Better science on how COVID-19 is transmitted
- Limited data on where COVID-19 transmission is occurring in Washington
 - 80-90% of disease is undetected

Governor's Order

- No indoor social gatherings unless initial 14 day stay home period
- Bars and restaurants closed for indoor dining
- Fitness centers closed for indoor operations
- Bowling alleys, movie theatres, museums, zoos, aquariums are closed for indoor service
- Activities in miscellaneous venues further restricted
- Real estate open houses prohibited
- Weddings and funerals limited to 30 people; no receptions
- Retail, professional & personal services limited to 25% capacity
- Religious services limited 25% occupancy or 200 people (no singing except soloist)
- Youth and adult sports limited to outdoors
- LTCF visits limited to outdoors

Bamlanivimab: EUA Criteria for Use

- Emergency use permitted for treatment of:
 - Mild to moderate COVID-19 in adults and pediatric patients (≥ 12 yrs old weighing at least 40 kg); AND
 - Positive results of direct SARS-CoV-2 viral testing; AND
 - At **high risk for progressing to severe COVID-19*** and/or hospitalization. At least one of the following:
 - Have a body mass index (BMI) ≥ 35
 - Have chronic kidney disease
 - Have diabetes
 - Have immunosuppressive disease
 - Are currently receiving immunosuppressive meds
 - Are ≥ 65 years of age
 - Are ≥ 55 years of age AND have CVD, HTN, or chronic resp disease
 - Are 12–17 years of age AND have BMI ≥ 85 th %ile, sickle cell disease, heart disease, neurodevelopmental disorders, medical-related technological dependence, or chronic respiratory disease requiring daily medication

Distribution of Federally-Purchased Bamlanivimab

- HHS purchased 300,000 doses of bamlanivimab
 - Have option to purchase 650,000 more doses
- HHS distributing doses to states based on HHS Protect data
- WA was allocated 720 doses in week 1 for hospitals and hospital system only (phase 1)
- WSHA/DOH asked which hospital wanted it
- Allocated doses to these hospitals proportionally per the number of COVID-19 patients in the hospital
 - Gave all requestors a minimum of 4 doses
- DOH will ask for the number of vials you want during the next allocation

DMAC and Infectious Disease Experts

- Concerns that safety and effectiveness data are not robust enough for widescale implementation
- Concerns about resources required to operationalize administration of bamlanivimab in addition to managing patient surge and vaccine planning
- Insufficient data to narrow criteria for use; healthcare facilities should use a randomized process to determine who should be offered medication
- Short document under development to communicate with hospitals and the public about use of bamlanivimab in Washington

We need your help!!

- Improve quality of WA Health data
- Hold press conference with and without public health to communicate with the public about the pandemic and the needs to adhere to public health guidance
- Vaccinate non-hospital based healthcare workers in your community
- Redistribute vaccine, if needed



Washington State Department of Health is committed to providing customers with forms and publications in appropriate alternate formats. Requests can be made by calling 800-525-0127 or by email at civil.rights@doh.wa.gov. TTY users dial 711.