



Washington State  
Hospital Association



# WSHA COVID-19 Member Call with State Leaders

November 16, 2020

# Agenda

**Welcome – Cassie Sauer, WSHA**

**Epi Report – Kathy Lofy, DOH**

**Governor's New Order**

**Banlamivimab**

**Vaccine Planning – Darcy Jaffe, WSHA**

**Long Term Care Advances – Zosia Stanley, WSHA**

**Recommitting to Social Distancing Messaging – Beth Zborowski, WSHA**

**Wrap Up Discussion/Questions – Cassie Sauer, WSHA**

**Epi Report**

**Governor's New Order**

**Banlamivimab**

Dr. Kathy Lofy, DOH



# Vaccine Planning

Darcy Jaffe, WSHA



## WA COVID-19 Vaccine Prioritization & Allocation Framework

### Interim Phase Guidance Summary (Nov 2020)

**GOAL:** to reduce severe morbidity and mortality and negative societal impact due to the transmission of SARS-CoV-2

#### Ethical Principles:

- Maximum benefit
- Equal concern
- Mitigation of health inequities

#### Procedural Principles:

- Fairness
- Transparency
- Evidence-based

#### Criteria:

- Risk of acquiring infection
- Risk of severe morbidity and mortality
- Risk of negative societal impact
- Risk of transmitting infection to others

#### Phase 1

##### 1a

- High risk workers in healthcare settings
- High risk first responders

#### OBJECTIVE:

To protect those at highest risk of exposure to suspected or confirmed COVID-19 patients and to maintain a functioning health system

# Long Term Care Advances

Zosia Stanley, WSHA



## DSHS Home & Community Services Surge Funding

- **WSHA advocacy with DSHS, DOH, OFM, Governor's Office**
- **Winter surge funding to address acute care capacity**
  - Effective November 13, 2020 until December 31, 2020.
  - Shorten HCS assessment process: within 72 hours of referral in most regions; 7 days in the highest volume areas.
  - HCS staff overtime to reduce length of stay and increase transitions.
  - SNF admissions incentive for dual eligible patients.
  - Expanding COVID+ nursing home units: HCS will expand COVID+ unit capacity.
- **Good first step, more is needed**
  - New surge funding narrower than spring funding
  - WSHA will continue advocacy

# Call to Action: Recommitting to Social Distancing

Beth Zborowski, WSHA





- Hospitals & Health Systems are joining the Washington State Department of Health in amplifying messages, especially about gathering safely
- **Join Us!** Reinforce social distancing with your family, friends and community



**FEWER. SHORTER. SMALLER. SAFER.**

A Guide to Gathering



## **Current State**

- COVID-19 cases are increasing dramatically and threaten to overwhelm the health care system.
- Informal social gatherings are significantly contributing to spread.
- The current increase in cases is a result of our actions a few weeks ago. Your choice to social distance today can prevent a crisis later this month.

## **Protecting Health Care Workers**

- Health care workers have been caring for COVID-19 patients for months now and they are tired.
- The best thing you can do to support them now is to not get COVID-19!

## **What you can do to stop the spread, protect health care workers, and keep health care services available:**

- Keep gatherings small, wear a mask and staying at least six feet apart.
- Thanksgiving should be immediate family only. We saw a bump in cases after Halloween and Thanksgiving has the potential to be even more devastating.
- Do not gather indoors with people from outside your household. Indoors is far riskier than outdoors.
- Wear masks, both outdoors and indoors when you are around anyone outside your household.

## Call to Action: Resources

- DOH Safe Gatherings site: <https://www.coronavirus.wa.gov/information-for/you-and-your-family/safer-gatherings>
- Partner toolkit for Safe Gatherings (second one down): <https://www.coronavirus.wa.gov/partner-toolkit>
- Downloadable resources from Seattle King County Public Health that can be used by anyone: <https://publichealthinsider.com/graphics-and-posters/>
- *Reducing coronavirus risk indoors in fall and winter:* <https://publichealthinsider.com/2020/10/02/reducing-coronavirus-risk-indoors-recommendations-for-fall-and-winter/>
- *What exactly is a close contact?* <https://publichealthinsider.com/2020/10/23/close-contact/>

# Wrap Up

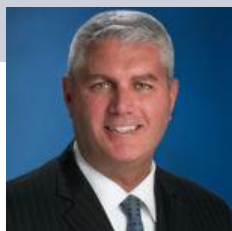
Cassie Sauer, WSHA





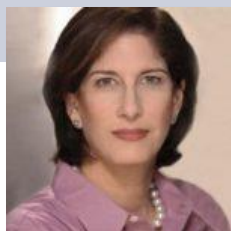
# WSHA Annual Meeting eSeries

**Sept. 16**



**Mike  
Abrashoff**

**Oct. 7**



**Mara Liasson**

**Oct. 28**



**Peer  
Exchange**

**Nov. 11**



**Carvell  
Wallace**

**Dec. 2**



**Don Berwick**

**More Info** → [www.wsha.org/event/annualmeeting](http://www.wsha.org/event/annualmeeting) | **Questions** → [ValerieA@wsa.org](mailto:ValerieA@wsa.org)

Thank you for your leadership!  
Questions? Discussion?

