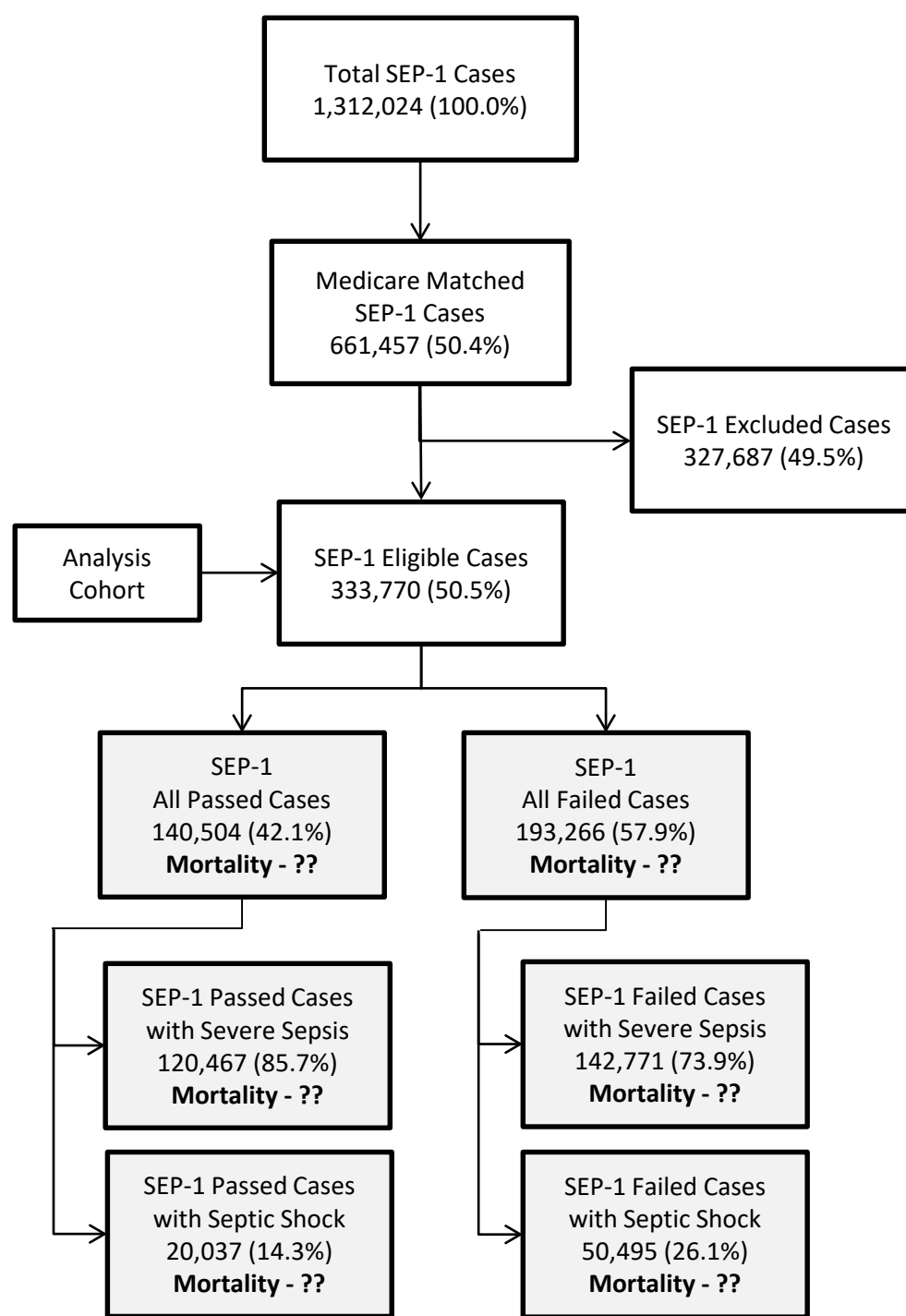
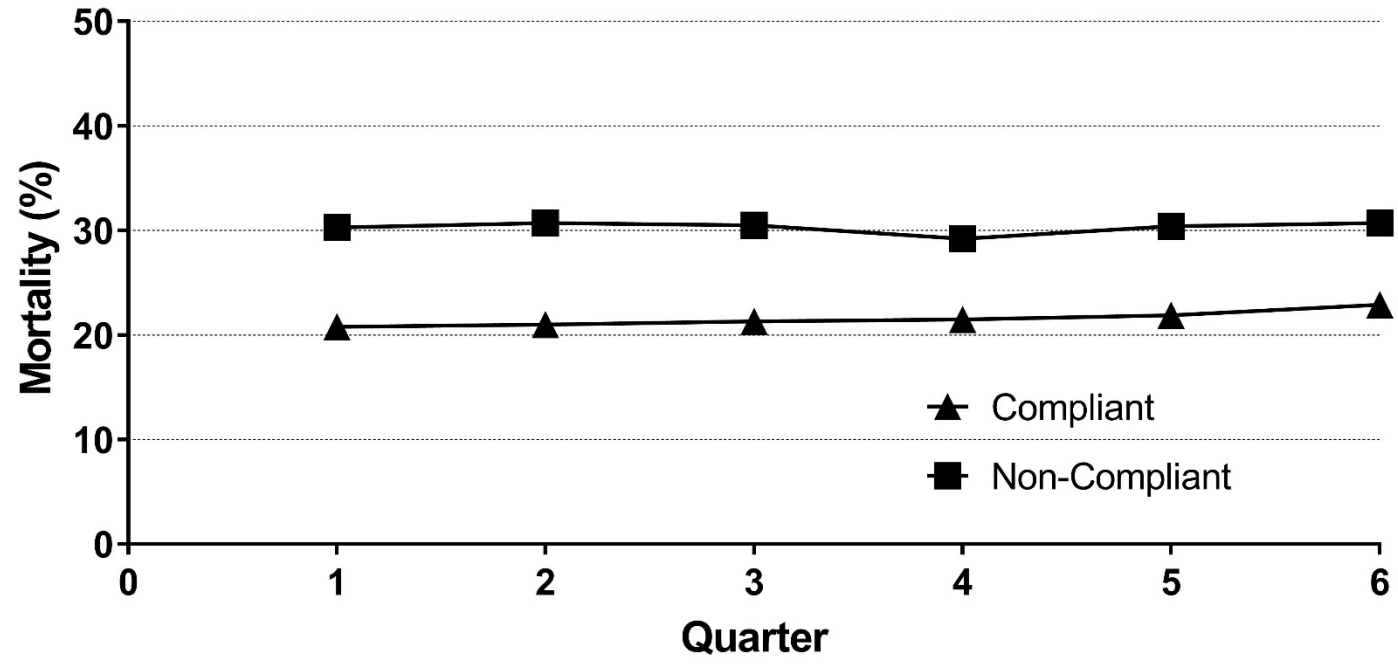


# Sepsis Measures Updates

Sean R. Townsend, MD



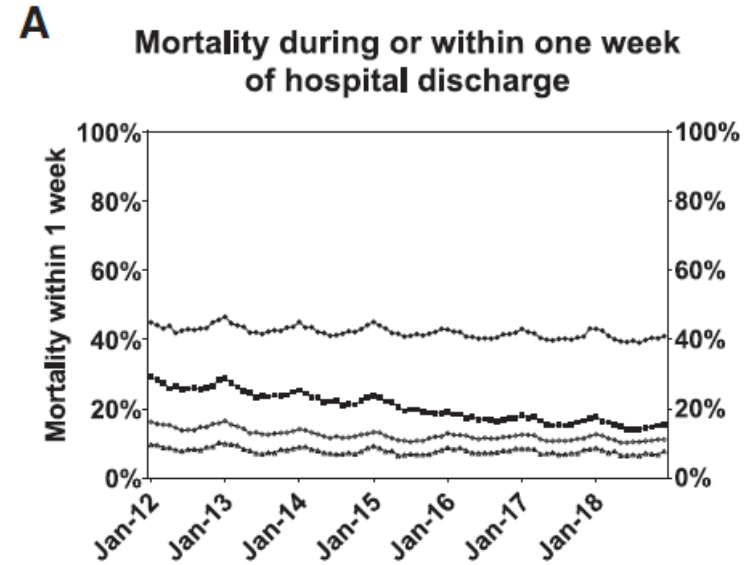
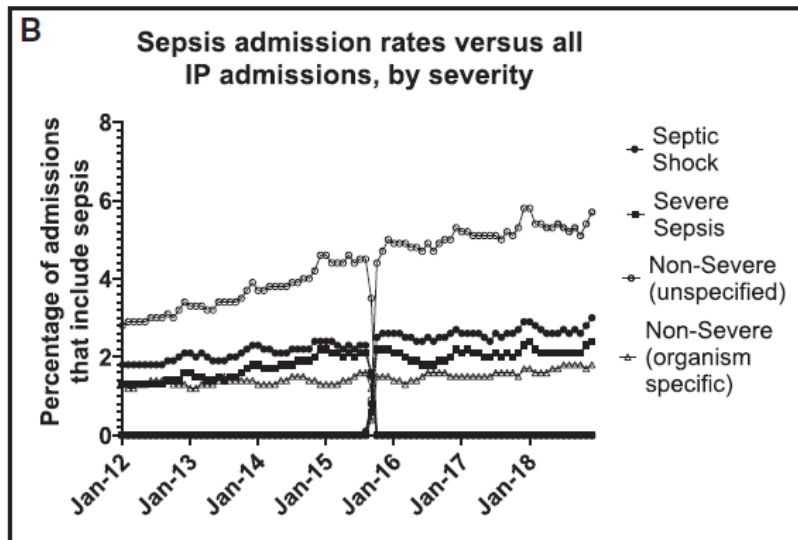
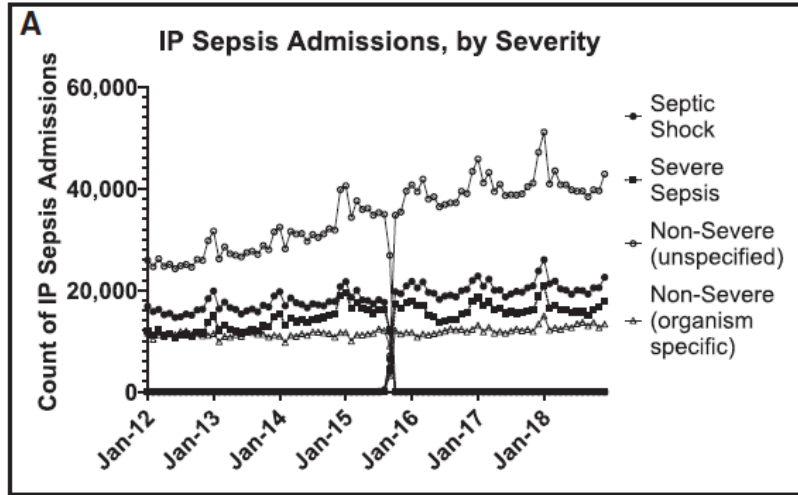
## All Patients



# The Future: Outcome Measure

- Performance measure means altering current performance
  1. Need to know current performance and trends (incidence & mortality)
  2. Need to know population being measured is responsive to changes

# Incidence & Mortality: Claims



Buchman TG, Simpson SQ, Sciarretta KL, et al. Sepsis Among Medicare Beneficiaries: 1. The Burdens of Sepsis, 2012-2018. Crit Care Med. 2020;48(3):276-288.

- Septic Shock
- Severe Sepsis
- Non-Severe (unspecified)
- △ Non-Severe (organism specific)