



Washington State  
Hospital Association



# COVID-19 Clinician Support

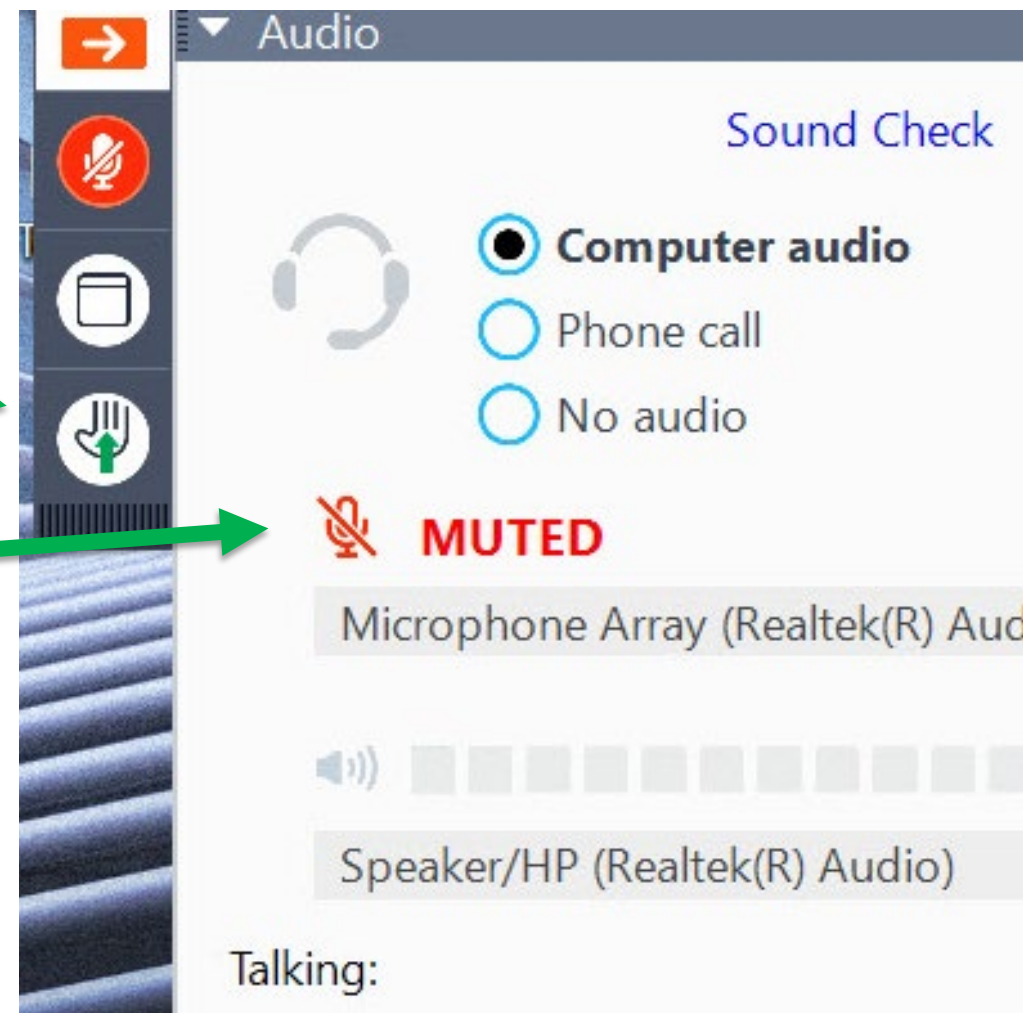
August 4, 2020

---

1. Raise your hand to speak – we will unmute you.

2. Make sure you aren't self muted

3. Do not put the call on hold or answer another line.



# Agenda

1. **Guidance Related to the Provision of Support Persons for Patients with Disabilities in hospitals**
2. **Epi report**
3. **Testing vs time and clearance**
4. **Testing updates**
5. **Providing clarity around N95 vs facemask for HCWs**
6. **PPE**

*We will have discussion and Q&A throughout the call. Use the “raise hand” function if you have a question or comment.*

# Support for Patients with Disabilities: DOH and WSHA Guidance



## Guidance Related to the Provision of Support Persons for Patients with Disabilities in Hospitals During COVID-19 Pandemic

July 22, 2020

<https://www.doh.wa.gov/Portals/1/Documents/1600/coronavirus/COVID-19Bulletin-SupportPersonsWSHA.pdf>