



Health Information Program



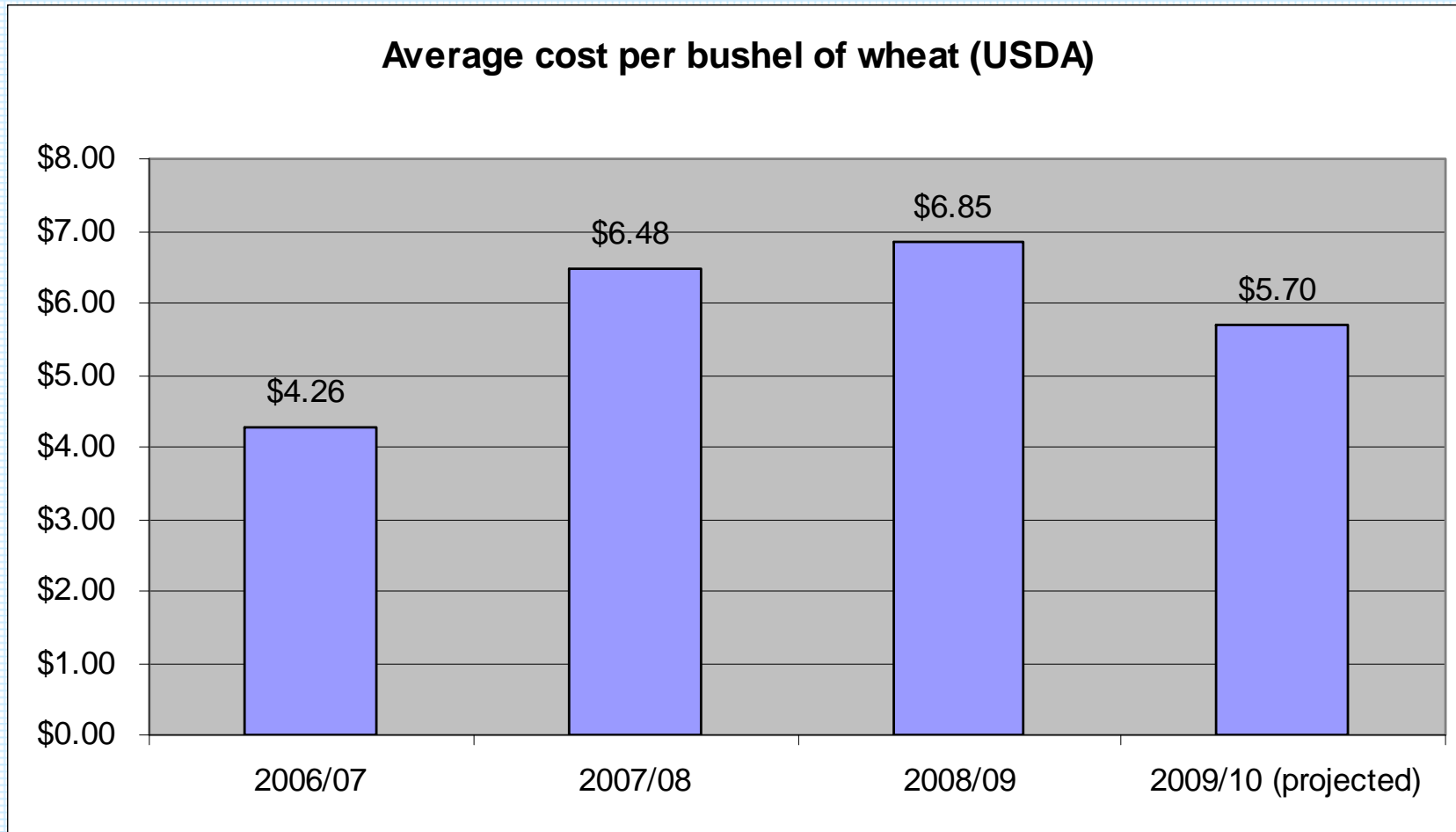
Washington
State
Hospital
Association

Economic Changes: The Data

Jim Cannon, Executive Director
WSHA Health Information Program

33rd Annual Rural Hospital Summer Workshop

Commodity Prices often play a large role in rural economic health.

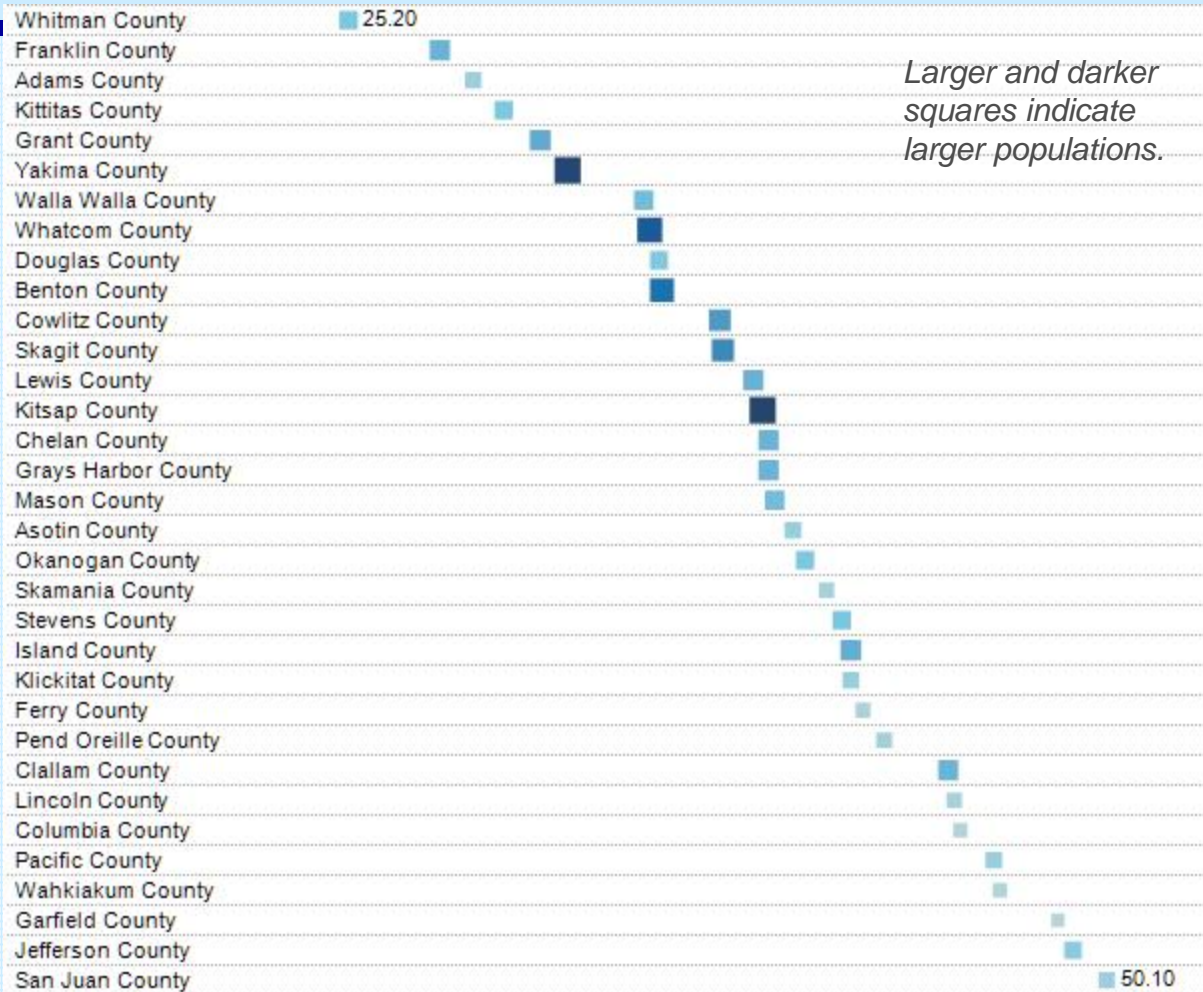


There are many other external drivers,
many of which are not obvious.

- Homeland security and slowing passage through borders
- Mad cow disease in other areas
- Bio fuels excitement
- Urban garbage storage plans
- Infrastructure issues
- Price of fuel for farming, transport, etc.



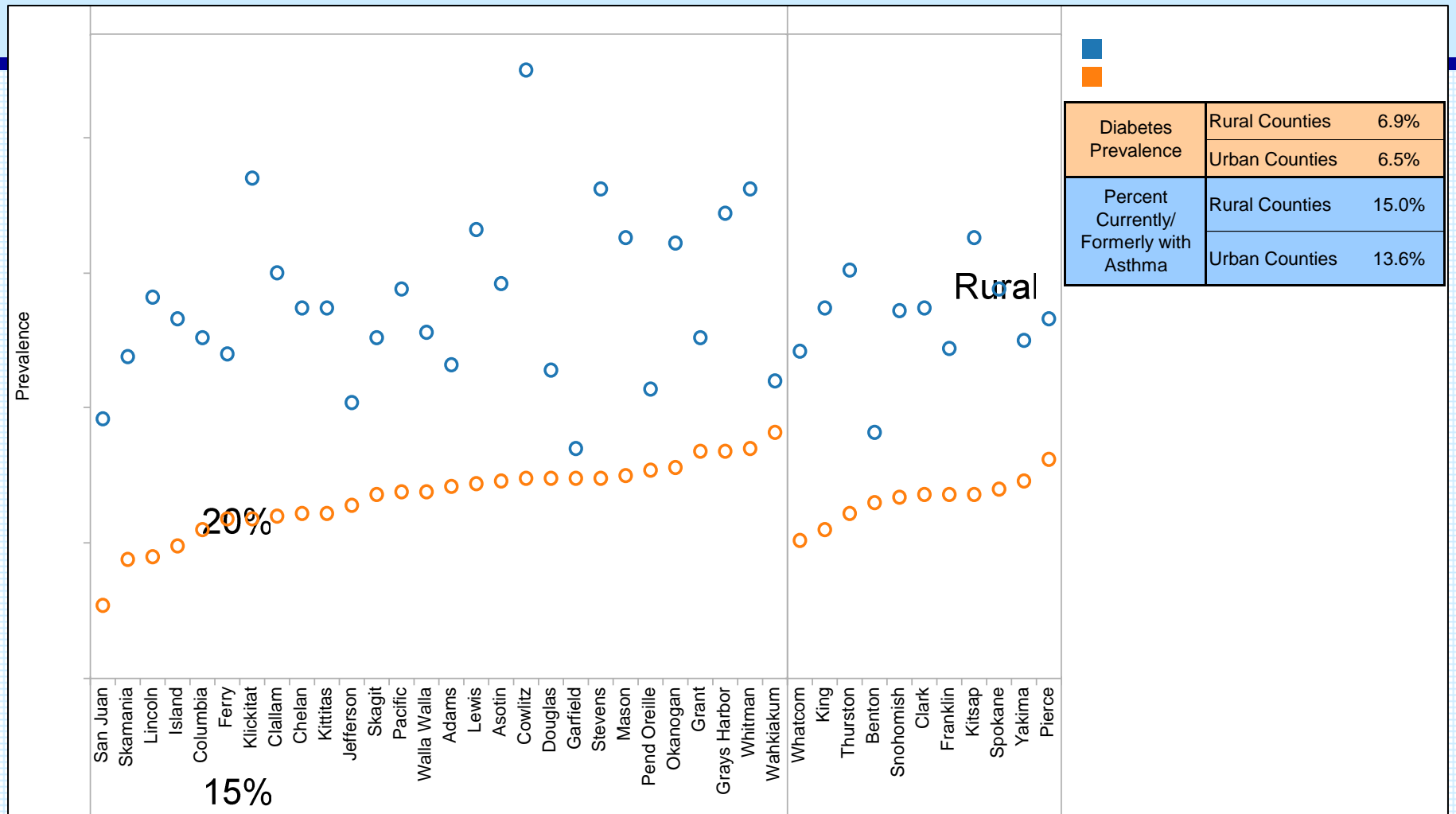
Median age varies greatly by county.



Data Source: U.S. Census Bureau, Population Division, County estimates by demographic characteristics.



Rural counties have higher incidences of diabetes and asthma than do urbans.



Source: Washington State Department of Health, 2006



Health Information Program



Rural counties have lower median household incomes than do urbans.



Source: Washington State Office of Financial Management, 2007



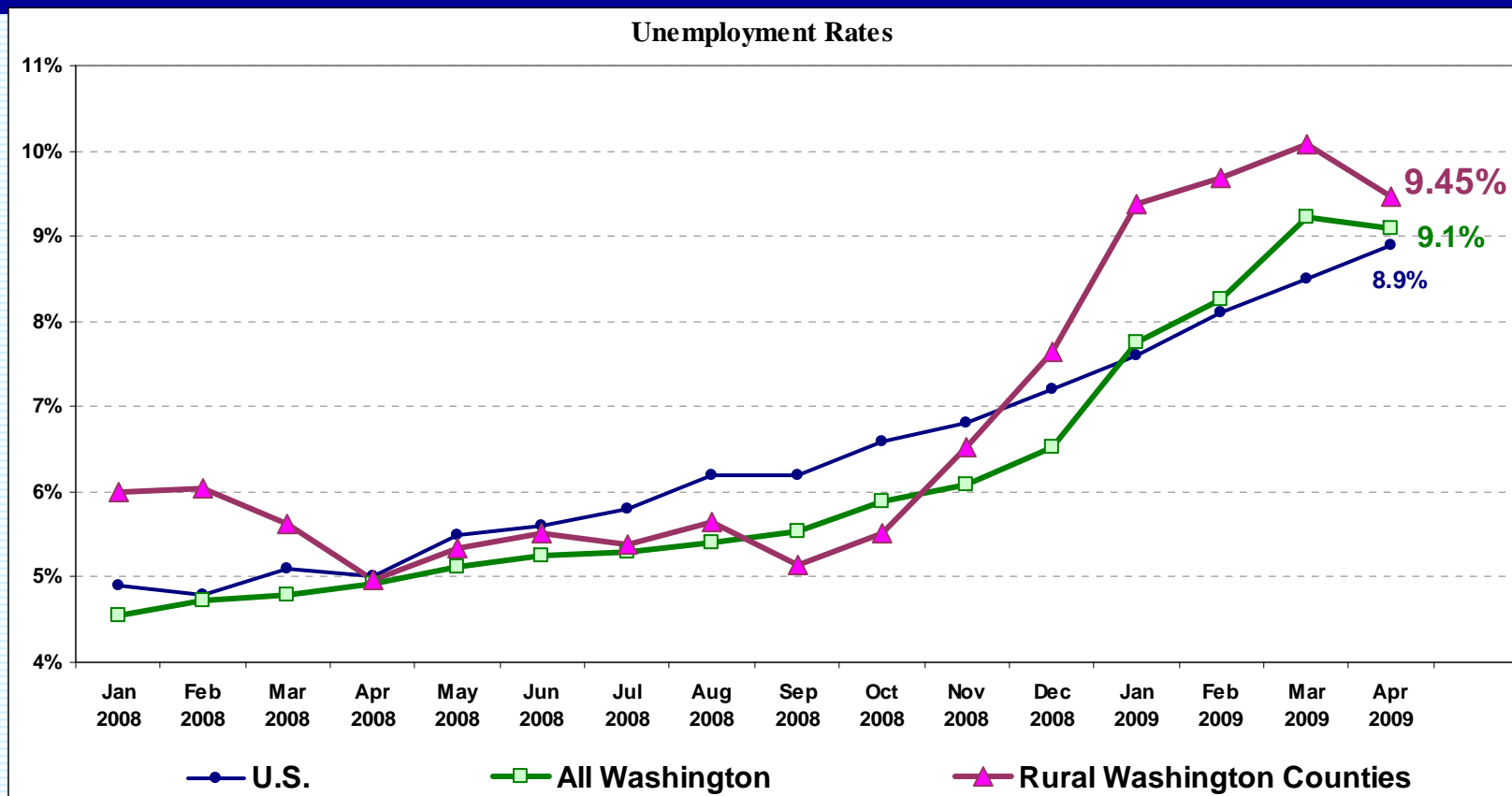
Health Information Program

Health care is a major employer in rural Washington.

- Hospitals employ more than 17,000 people in rural Washington counties.
- For every hospital job at least one more job is supported in the community.
- Hospitals are the fifth largest employment group in the state.

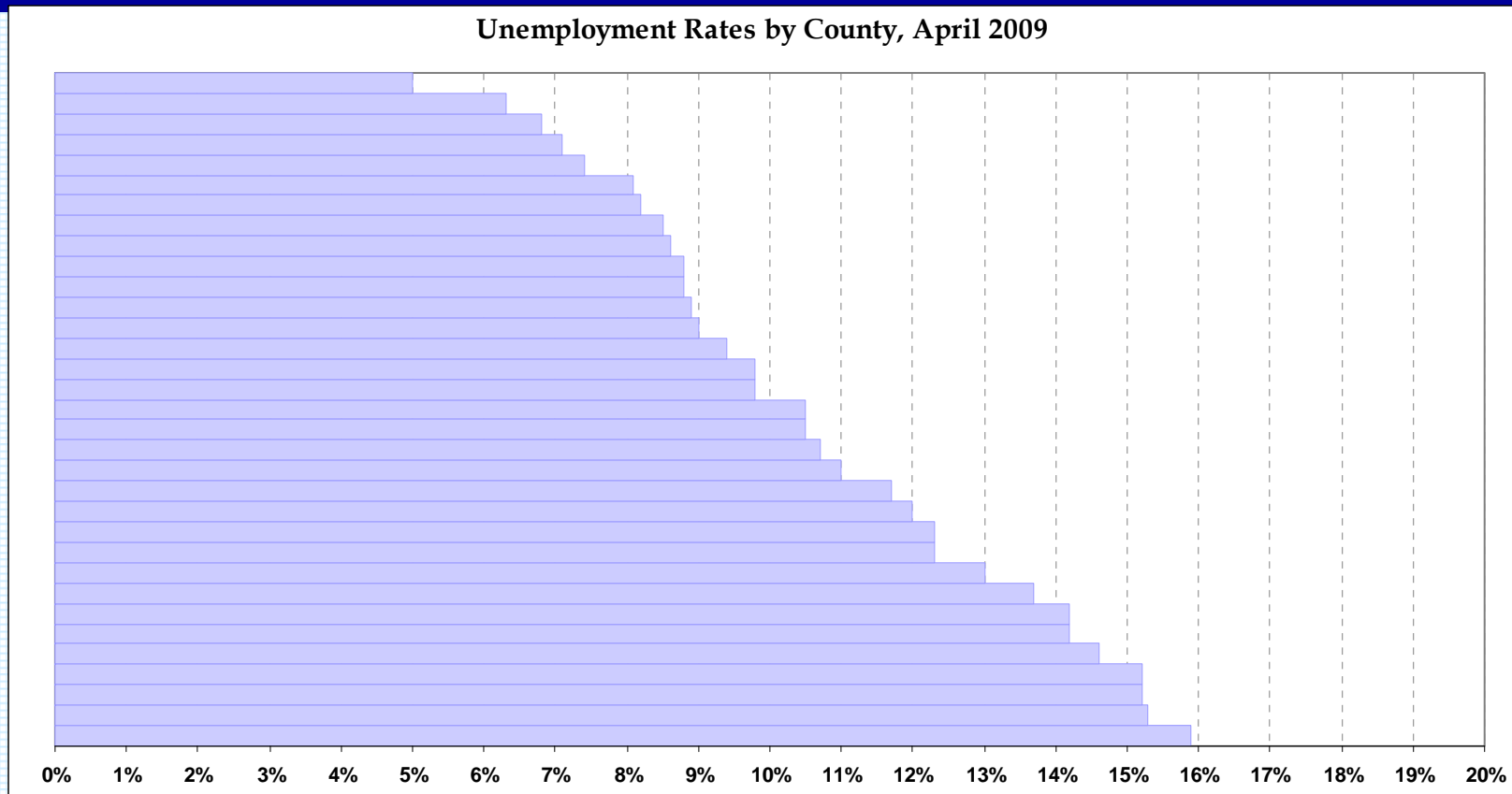


Rural unemployment in Washington is higher than the state or national averages.



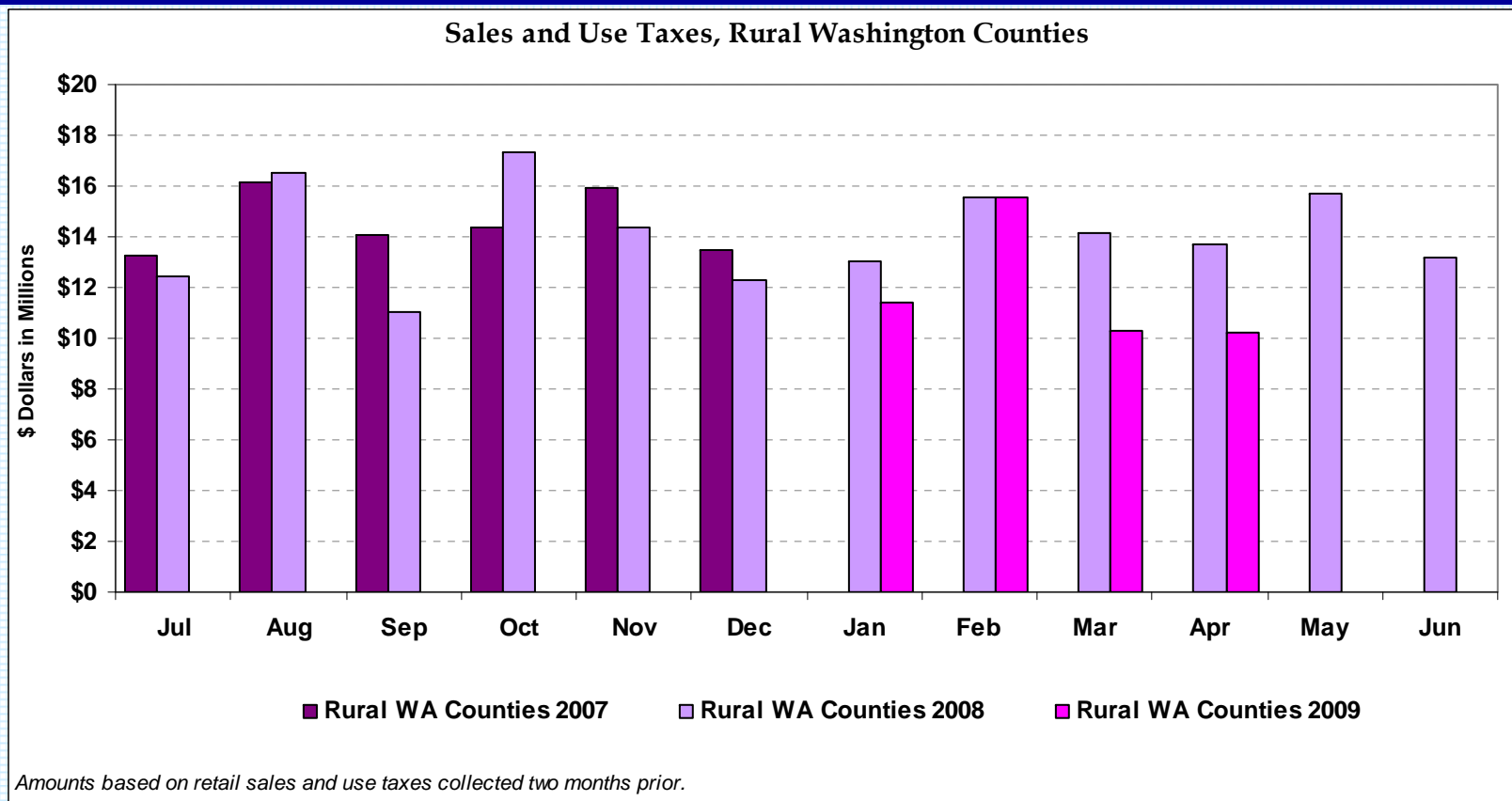
Data Sources: National - Department of Labor, Bureau of Labor Statistics, Labor Force Statistics.
 Washington - Washington State Employment Security Department, Labor Market and Economic Analysis Branch. Resident Civilian Labor Force and Employment in Washington State, Seasonally Adjusted.

Counties vary considerably in rates of unemployment (from 5 to 16 percent).



Data Sources: National - Department of Labor, Bureau of Labor Statistics, Labor Force Statistics.
Washington - Washington State Employment Security Department, Labor Market and Economic Analysis Branch. Resident Civilian Labor Force and Employment in Washington State, Seasonally Adjusted.

Tax receipts in rural counties are down from a year ago



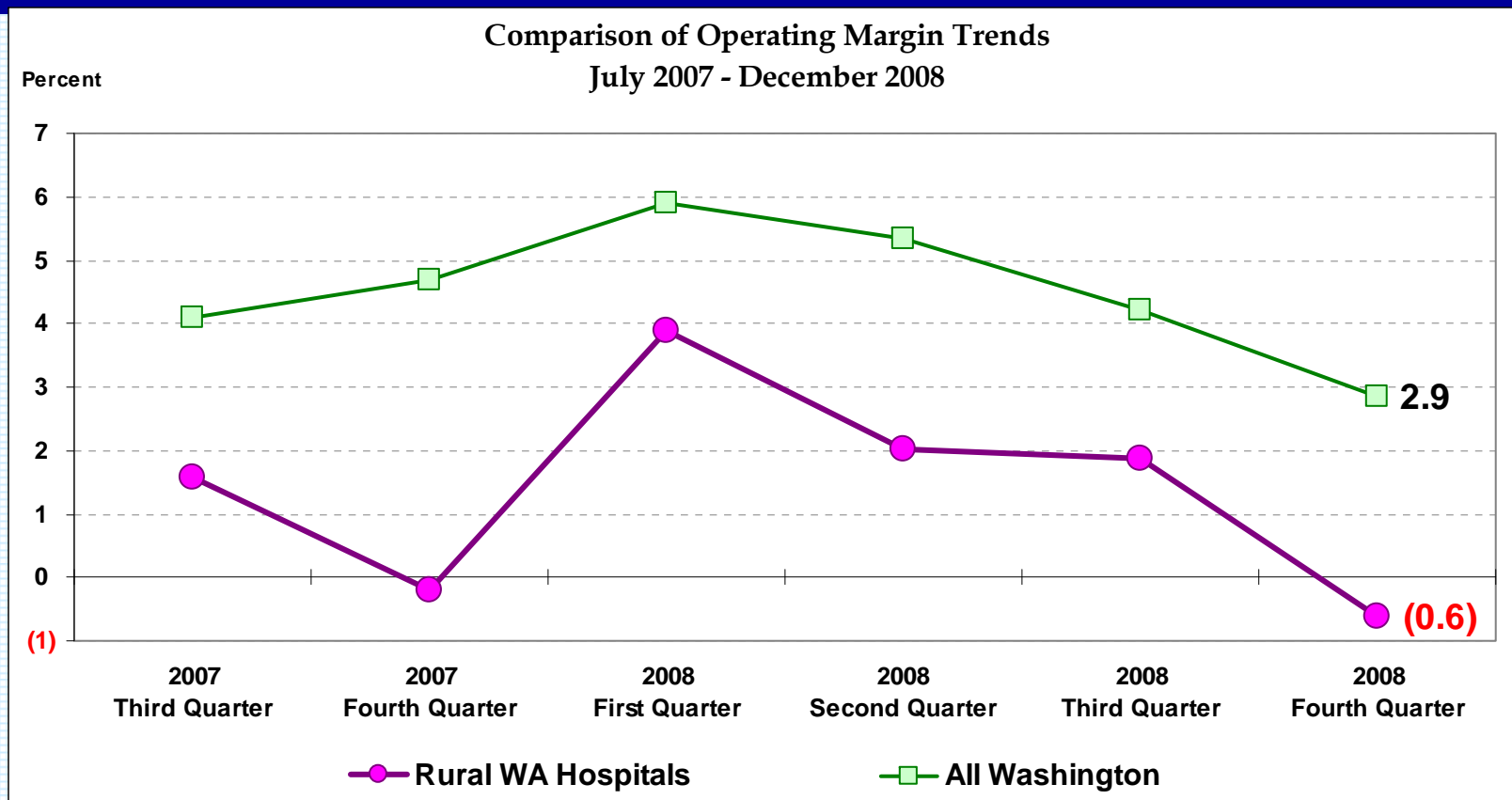
Data Source: Washington State Department of Revenue



Health Information Program

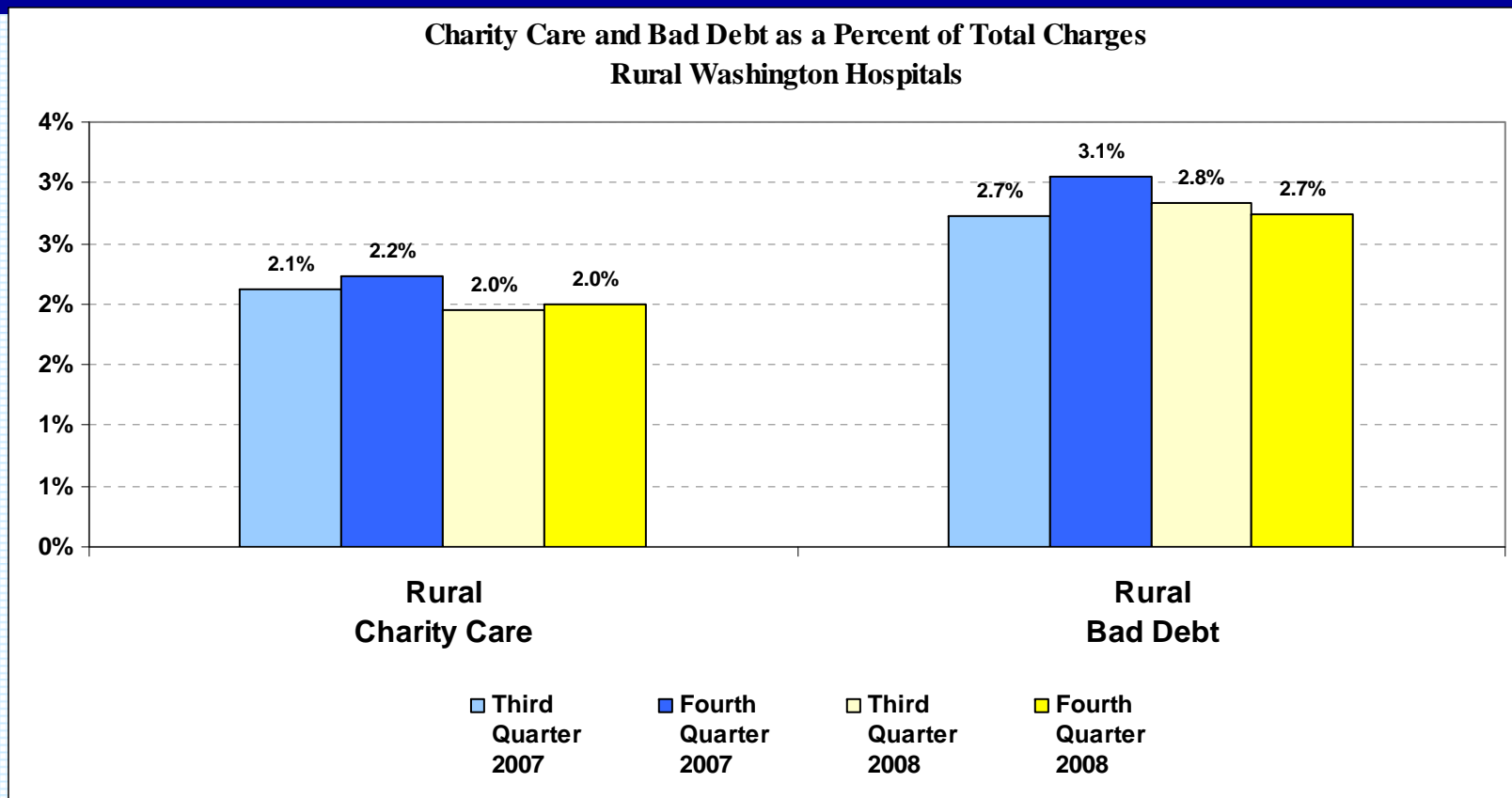


Operating margins are consistently lower for rural hospitals and were negative fourth quarter 2008.



Data Source: DATABANK Quarterly Financial Reporting System unaudited data, as of June 9, 2009.

Charity care and bad debt in rural areas have been stable as a percent of charges.



Data Source: DATABANK Quarterly Financial Reporting System unaudited data, as of June 9, 2009.

For further information

Jim Cannon, Executive Director
Health Information Program
(206) 216-2551
jimc@wsha.org



Health Information Program

